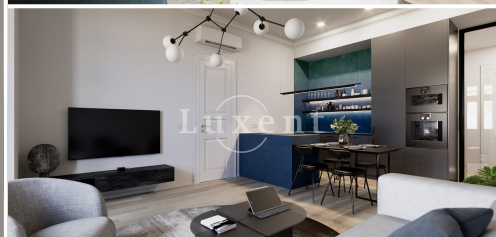




Sale of a duplex apartment 2+kt/T, 66,5 sqm, in Na Spojce project, Prague 10 - Vršovice



🏠 67 m² 📄 Na spojce, Praha 10 - Vršovice 💰 13 838 370 CZK per property



WITH THIS PROPERTY, YOU'LL BE ASSISTED BY

Mgr. Adam Kvasnička

LEASE SPECIALIST

adam.kvasnicka@luxent.cz

+420 730 511 611

Order number	NS-27	Price	13 838 370 CZK per property
Address	Na spojce, Praha 10 - Vršovice	Type	Apartments
Disposition	2 + kitchenette	Usable area	67 m²
Low energy	No	Energy performance of the building	G - Extremely uneconomical
Floor	5th floor	Device	No
Terrace	11 m²	Cellar	2 m²
Lift	Yes		

About real estate

We offer for sale duplex apartment in 2+kt with a total usable area of 66,5 sqm with a terrace (11 sqm), which is part of a historic apartment building, which is undergoing complete reconstruction and is situated in a quiet area of Prague 10 with excellent transport accessibility. The apartment has a cellar.

The layout offers on the first floor an entrance hall with staircase, living room with kitchenette, toilet and storage room. The second floor has a bedroom with access to the terrace and a bathroom with toilet. All the offered apartments stand out for their high standard, which includes wooden floors, quality tiles and sanitary ware, lighting and more. Kitchen units and built-in wardrobes can be supplied above list price.

The surrounding area offers excellent amenities. Plenty of great cafes, restaurants as well as boutique shops. Nearby Čechovo náměstí is home to several well-known cultural events for children and adults. Several parks are within walking distance, such as Herold's Orchards, the popular Havlíček Orchards and Grébovka Vineyards. Sports activities are provided by the TJ Sokol Praha Vršovice and the famous football stadium Ďolíček. The apartment building boasts excellent transport accessibility with several tram stops just a few steps from the house. All this makes this location a quiet place to live near the center of Prague.

The order	Layout	Floor	Usable area	Living area	Terrace / Balcony / Loggia	Garden	Price
NS-1	2 + kitchenette	1st underground floor	74 m ²	59 m ²	No / No / No	Yes (12 m ²)	11 070 696 CZK
NS-2	1 + kitchenette	1st underground floor	43 m ²	27 m ²	No / No / No	Yes (14 m ²)	6 161 610 CZK
NS-3	2 + kitchenette	1st underground floor	79 m ²	58 m ²	No / No / No	Yes (19 m ²)	11 161 605 CZK
NS-4	2 + kitchenette	ground floor	45 m ²		No / 2 m ² / No	No	8 282 820 CZK
NS-5	3 + kitchenette	ground floor	76 m ²		No / No / No	No	14 444 430 CZK
NS-6	3 + kitchenette	ground floor	66 m ²		No / No / No	No	12 020 190 CZK
NS-7	3 + kitchenette	ground floor	63 m ²		No / No / No	No	11 414 129 CZK
NS-8	3 + kitchenette	ground floor	70 m ²		No / 2 m ² / No	No	13 080 795 CZK
NS-9	3 + kitchenette	1st floor	81 m ²		No / 4 m ² / No	No	15 434 328 CZK
NS-10	2 + kitchenette	1st floor	56 m ²	51 m ²	No / 4 m ² / No	No	RESERVED
NS-11	2 + kitchenette	1st floor	44 m ²		No / No / No	No	8 888 880 CZK
NS-14	2 + kitchenette	2nd floor	46 m ²		No / 2 m ² / No	No	8 686 860 CZK
NS-15	3 + kitchenette	2nd floor	80 m ²		No / No / No	No	15 565 641 CZK
NS-16	2 + kitchenette	2nd floor	53 m ²		No / No / No	No	10 050 495 CZK
NS-17	2 + kitchenette	2nd floor	44 m ²		No / No / No	No	8 939 385 CZK
NS-18	2 + kitchenette	2nd floor	55 m ²	54 m ²	No / No / No	No	11 211 000 CZK
NS-19	2 + kitchenette	3rd floor	46 m ²		No / 2 m ² / No	No	8 585 850 CZK
NS-20	3 + kitchenette	3rd floor	79 m ²		No / No / No	No	15 646 449 CZK
NS-21	2 + kitchenette	3rd floor	53 m ²		No / No / No	No	10 080 798 CZK
NS-22	3 + kitchenette	3rd floor	72 m ²		No / 2 m ² / No	No	13 387 865 CZK
NS-23	2 + kitchenette	4th floor	47 m ²		No / 2 m ² / No	No	8 913 122 CZK
NS-24	3 + kitchenette	4th floor	80 m ²		No / 2 m ² / No	No	15 505 035 CZK
NS-25	2 + kitchenette	5th floor	45 m ²		No / No / No	No	9 191 910 CZK
NS-26	3 + kitchenette	5th floor	92 m ²		17 m ² / No / No	No	18 161 598 CZK
NS-27	2 + kitchenette	5th floor	67 m ²		11 m ² / No / No	No	13 838 370 CZK
NS-28	4 + kitchenette	5th floor	115 m ²		16 m ² / No / No	No	23 636 340 CZK
NS-29	3 + kitchenette	5th floor	102 m ²		17 m ² / No / No	No	20 080 788 CZK
NS-30	3 + kitchenette	5th floor	103 m ²		24 m ² / No / No	No	20 959 575 CZK
NS-31	2 + kitchenette	5th floor	38 m ²		No / No / No	No	8 636 355 CZK