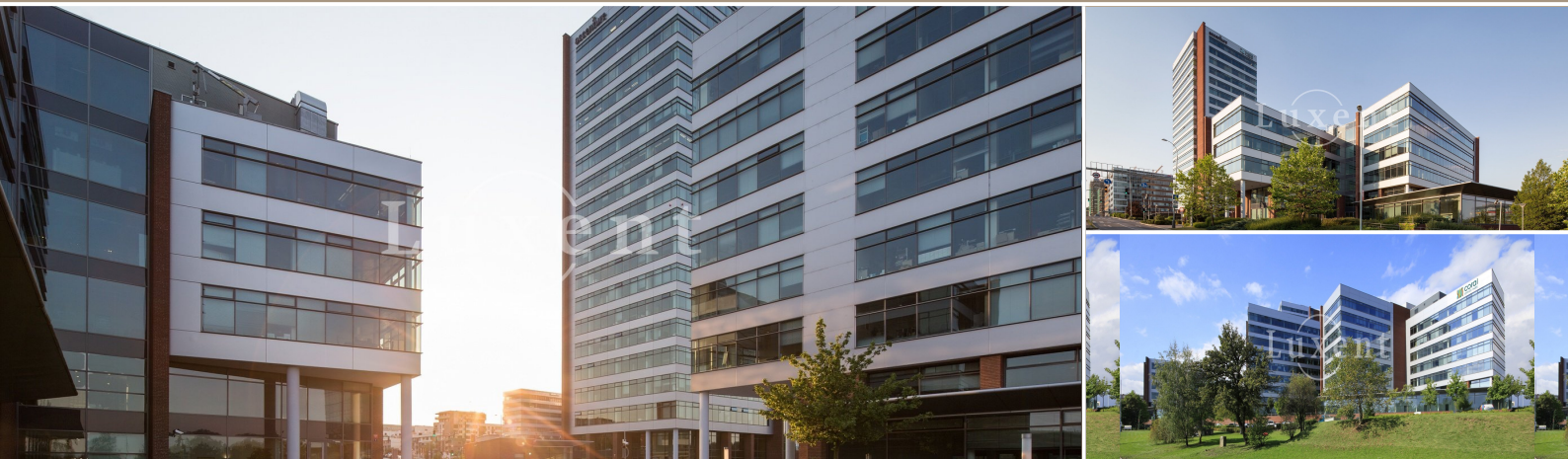




## Rent of an office in a new office park project, 422 sqm, Prague 5 - Nové Butovice



🏠 422 m<sup>2</sup> 📄 Bucharova, - Stodůlky 🏠 353 CZK per m2 / month



WITH THIS PROPERTY, YOU'LL BE ASSISTED BY

**Anna-Maria Liubun**  
ASSISTANT

annamaria.liubun@luxent.cz  
+420 770 189 189

Order number	<b>COP-1</b>	Price	<b>353 CZK per m2 / month + VAT + fees</b>
Address	<b>Bucharova, - Stodůlky</b>	Type	<b>Offices</b>
Usable area	<b>422 m<sup>2</sup></b>	Parking	<b>5</b>
Floor area	<b>422 m<sup>2</sup></b>	Office area	<b>422 m<sup>2</sup></b>
Area of non-residential premises	<b>422 m<sup>2</sup></b>	Low energy	<b>No</b>
Energy performance of the building	<b>G - Extremely uneconomical</b>	Floor	<b>1st floor</b>
Garage	<b>Yes</b>	Lift	<b>Yes</b>
Year of construction	<b>2002</b>	Date to move in	<b>15. 2. 2023</b>

## About real estate

Our company offers an office unit, located on the 1st floor of a modern building, located in close proximity to the B New Line metro station, just a few minutes by car from the Prague circuit and the D5 highway.

Office space allows large-scale office solutions as well as enclosed offices, new low ceilings and LED lighting, effective office partitioning with a 1.35 m module, a separate kitchen for each tenant and high-speed elevators. There are also fully openable windows in the buildings, central HVAC in all buildings, 4 tubular air conditioning and temperature control in individual zones.

The buildings include reception with turnstiles, 24-hour security service, ACS access system (magnetic cards), electronic fire alarm system in each building, sprinklers in C and D buildings, electronic fire detectors in each building, CCTV system monitoring all buildings and their surroundings.

Parking is provided directly in the building.

For more information, do not hesitate to contact us.

We recommend a tour.