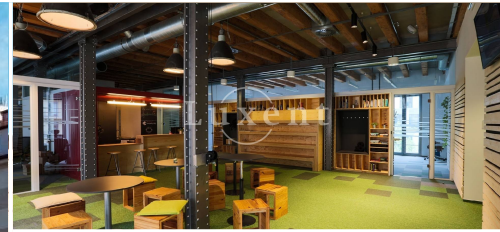




Representative office for rent, 522 m², Prague 7 - Holešovice



🏠 522 m² 📄 Jankovcova, Praha 7 - Holešovice 📞 416 CZK per m2 / month



WITH THIS PROPERTY, YOU'LL BE ASSISTED BY

Filip Sloupenský

COMMERCIAL LEASE SPECIALIST

filip.sloupensky@luxent.cz

+420 771 229 229

Order number	N6991	Price	416 CZK per m2 / month + services
Address	Jankovcova, Praha 7 - Holešovice	Type	Offices
Usable area	522 m²	Parking	Yes
Low energy	No	Energy performance of the building	G - Extremely uneconomical
Floor	6th floor	Device	Partly
Lift	Yes		

About real estate

We offer for rent a representative office space of 522 sqm in the administrative complex of the business park in Prague Holešovice. This unique project combines history with modern design. Flexible divisible and modern office units are available. The building offers 6,500 m² of lettable space and more than 350 parking spaces.

The building offers a representative central reception, 24/7 magnetic card access, security, caretaker and maintenance, bicycle facilities, changing rooms and showers for cyclists. There is also a restaurant, café, canteen supermarket, dental surgery, barbershop and ATM. The complex also includes a fitness centre, newsagent, laundry, conference centre and Copy General.

The Holešovice district of the city is exceptional for its unique cultural opportunities, such as the DOX Centre for Contemporary Art, La Fabrika cultural space, etc. This location in Holešovice is perfectly accessible both by car and public transport (metro C - Nádraží Holešovice, bus stop V Přístavu, tram No. 12, No. 14, No. 24 to the stop Ortenovo nám.).

For more information contact the broker.