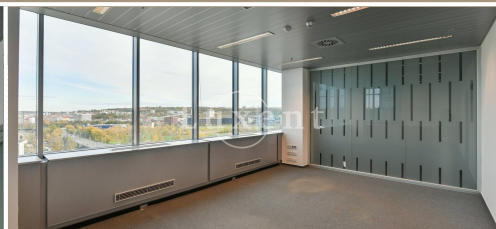
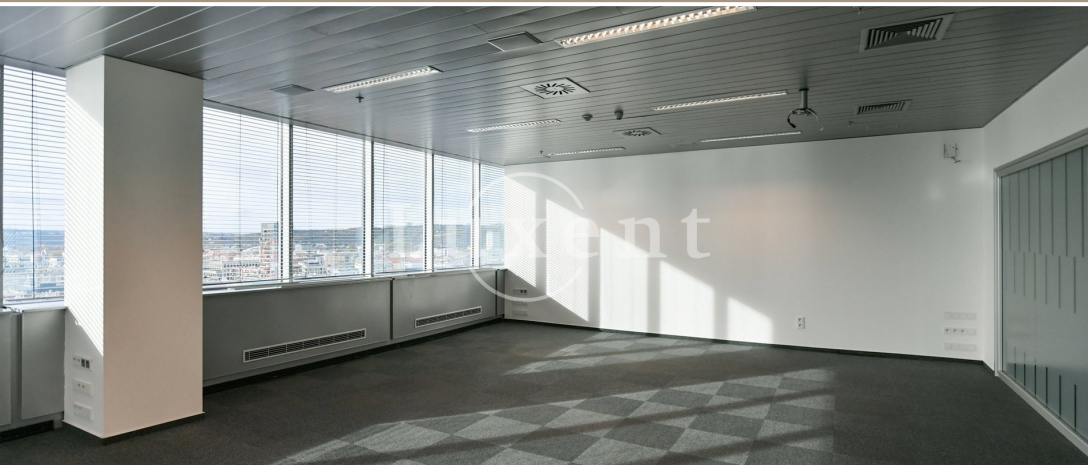




## Office for rent with panoramic views, 500 sqm, Jankovcova - Prague 7



🏠 500 m<sup>2</sup> 📄 Jankovcova, Praha 7 - Holešovice 📄 303 CZK per m2 / month



WITH THIS PROPERTY, YOU'LL BE ASSISTED BY

**Filip Sloupenský**

COMMERCIAL LEASE SPECIALIST

filip.sloupensky@luxent.cz

+420 771 229 229

Order number	<b>N6747</b>	Price	<b>303 CZK per m2 / month + services</b>
Address	<b>Jankovcova, Praha 7 - Holešovice</b>	Type	<b>Offices</b>
Usable area	<b>500 m<sup>2</sup></b>	Parking	<b>Yes</b>
Low energy	<b>No</b>	Energy performance of the building	<b>G - Extremely uneconomical</b>
Floor	<b>1st floor</b>	Number of floors	<b>17</b>
Date to move in	<b>15. 1. 2024</b>		

## About real estate

We offer attractive office space for rent in the distinctive Tokovo building, which is undoubtedly the dominant feature of Prague 7 thanks to its height and panoramic views around its entire perimeter.

The building is unmistakable and well-known, and in addition to the views from the offices and the terrace, it offers excellent accessibility and plenty of parking not only for employees but also for clients.

Tokovo has a beautiful lobby with a reception and rest area, where you will find lots of greenery and comfortable seating. In the lobby there is a nice bistro/cafe where you can buy snacks and delicious coffee of all kinds.

There is a fully equipped bike room, a gym with guided classes, conference facilities and a large green terrace with seating, perhaps for those who like to dine in the fresh air.

The building is close to the Vltavská metro line C and the Palmovka metro line B, as well as tram stops. There is a bus stop and a train station two minutes' walk from Tokovo. Holešovice is a fast-growing district that is becoming increasingly attractive due to its location.