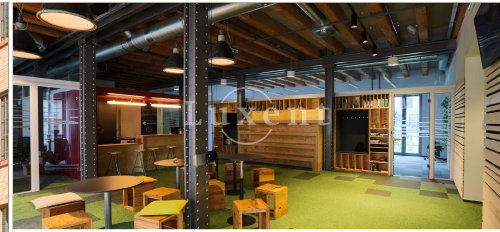




## Representative office for rent, 853 sqm, Prague 7 - Holesovice



🏠 853 m<sup>2</sup> 📄 Jankovcova, Praha 7 - Holešovice 📞 340 CZK per m2 / month



WITH THIS PROPERTY, YOU'LL BE ASSISTED BY

**Filip Sloupenský**

COMMERCIAL LEASE SPECIALIST

filip.sloupensky@luxent.cz

+420 771 229 229

Order number	<b>N6992</b>	Price	<b>340 CZK per m2 / month + services</b>
Address	<b>Jankovcova, Praha 7 - Holešovice</b>	Type	<b>Offices</b>
Usable area	<b>853 m<sup>2</sup></b>	Parking	<b>Yes</b>
Low energy	<b>No</b>	Energy performance of the building	<b>G - Extremely uneconomical</b>
Floor	<b>2nd floor</b>	Device	<b>Partly</b>
Lift	<b>Yes</b>		

## About real estate

We offer for rent a representative office space of 853 sqm in the administrative complex of the business park in Prague Holešovice. This unique project combines history with modern design. Flexible divisible and modern office units are available. This building offers 6,500 m<sup>2</sup> of lettable space and more than 350 parking spaces.

The building offers a representative central reception, 24/7 magnetic card access, security, caretaker and maintenance, bicycle facilities, changing rooms and showers for cyclists. There is also a restaurant, café, canteen supermarket, dental surgery, barbershop and ATM. The complex also includes a fitness centre, newsagent, laundry, conference centre and Copy General.

The Holešovice district of the city is exceptional for its unique cultural opportunities, such as the DOX Centre for Contemporary Art, La Fabrika cultural space, etc. This location in Holešovice is perfectly accessible both by car and by public transport (metro C - Nádraží Holešovice, bus stop V Přístavu, tram No. 12, No. 14, No. 24 to the Ortenovo nám. stop).

For more information contact the broker.