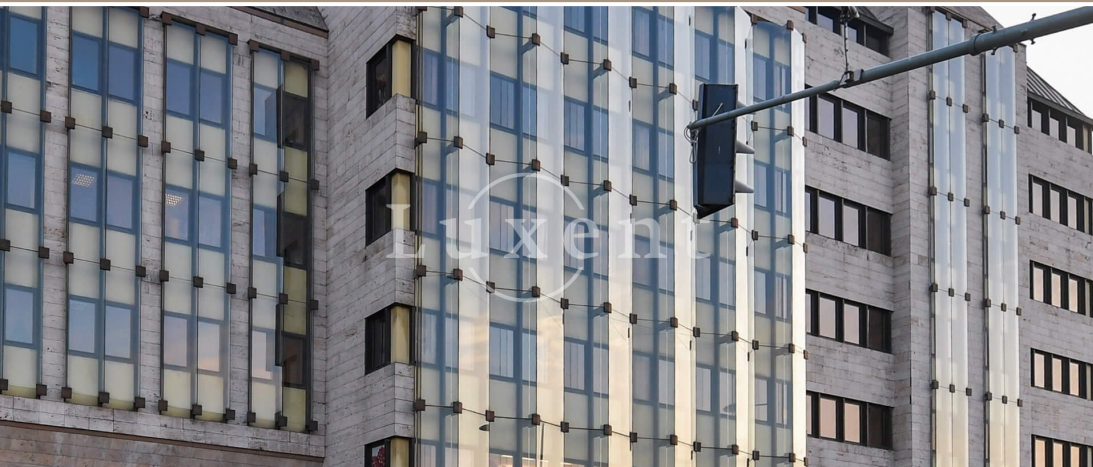




Rent of a commercial unit, 120 sqm, Praha - Bubeneč



🏠 120 m² 📄 Milady Horákové, Praha 6 - Bubeneč 📄 330 CZK per m2 / month



WITH THIS PROPERTY, YOU'LL BE ASSISTED BY

Filip Sloupenský

COMMERCIAL LEASE SPECIALIST

filip.sloupensky@luxent.cz

+420 771 229 229

Order number	N7001	Price	330 CZK per m2 / month + services
Address	Milady Horákové, Praha 6 - Bubeneč	Type	Offices
Usable area	120 m²	Parking	Yes
Low energy	No	Energy performance of the building	G - Extremely uneconomical
Floor	2nd floor	Device	Partly
Lift	Yes	Date to move in	7. 8. 2024

About real estate

We offer for rent office space in an office building near the Hradčanská metro station in a building with a rich history. Originally the building served as the headquarters of the Ministry of Electrical Industry and later as the home address of Škoda. After extensive renovation, it now offers more than 9,000 m² of rentable space in a quiet and picturesque area of Prague 6.

The complex consists of two buildings that are interconnected by communication and stand out architecturally and technically. Thanks to its conceptual flexibility, it can satisfy the space requirements of entities of all sizes. In addition, this building offers excellent accessibility via public and passenger transport and has a high visibility.

There is 24-hour security, security and central reception, smoke detectors, internet, internal blinds, fibre optics, operable windows and sprinklers. Access is by magnetic card.

It is possible to rent a parking space in the garage for an additional fee.

From the top floors you can enjoy a magnificent view of Prague Castle and within walking distance you will find Letná Park. All in all, this building offers a unique and pleasant working environment that will be appreciated by both smaller and larger entities.

For more information, please contact the broker.