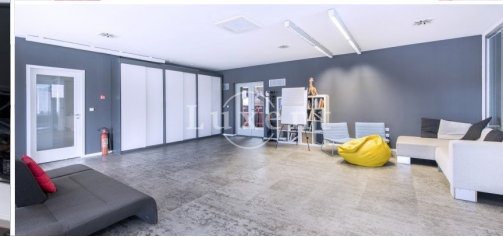
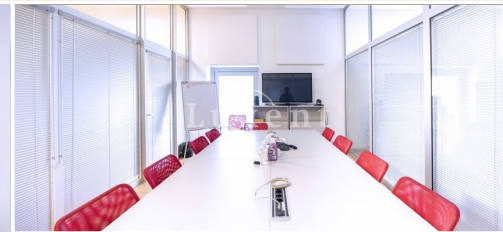




An office for rent, 629 sqm, Prague 5 - Smichov



🏠 629 m² 📄 Strakonická, Praha 5 🏠 277 CZK per month



WITH THIS PROPERTY, YOU'LL BE ASSISTED BY

Filip Sloupenský

COMMERCIAL LEASE SPECIALIST

filip.sloupensky@luxent.cz

+420 771 229 229

Order number	N7159	Price	277 CZK per month + services + VAT
Address	Strakonická, Praha 5	Type	Offices
Usable area	629 m²	Parking	Yes
Low energy	No	Energy performance of the building	G - Extremely uneconomical
Floor	1st floor	Device	Partly
Lift	Yes		

About real estate

We offer for rent an office unit in a complex situated in the renovated building of Radlická mlékárna. The total area of the complex is 7 800 sqm. The premises offer the possibility of variable layout and rental of fully equipped and unfurnished spaces. The top floors of the building offer a beautiful view of the Vltava River and Vyšehrad.

The office space for rent has a reception, air conditioning, double floors, blinds, high-speed elevators and security. The building has class A office amenities. There are restaurants, small cafes and a fitness centre in the vicinity of the building.

This business park is a complex of office buildings with excellent location and accessibility. One of its key advantages is a large parking lot for tenants, which is located in close proximity to the exit to the highway in the direction of Jižní spojka, the airport and the direction of České Budějovice. There is excellent transport accessibility - the complex is located in the immediate vicinity of the metro station B - Smíchovské nádraží and the tram and train station of the same name.

Services: 150,- CZK/sqm/month

Parking: 100 EUR/place/month