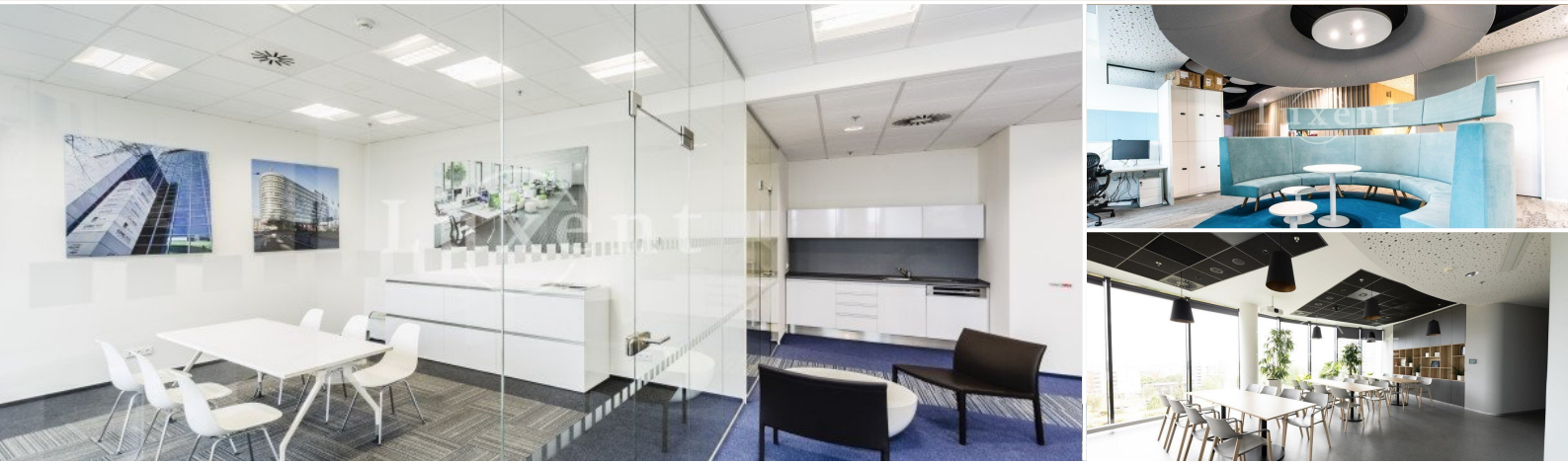




An office space for rent with terrace, 793 sqm, Prague 4 - Michle



🏠 793 m² 📄 Jihlavská, Praha 4 💰 391 CZK per m2 / month



WITH THIS PROPERTY, YOU'LL BE ASSISTED BY

Filip Sloupenský

COMMERCIAL LEASE SPECIALIST

filip.sloupensky@luxent.cz

+420 771 229 229

Order number	N7118	Price	391 CZK per m2 / month + services
Address	Jihlavská, Praha 4	Type	Offices
Usable area	793 m²	Parking	Yes
Low energy	No	Energy performance of the building	G - Extremely uneconomical
Floor	ground floor	Device	Partly
Lift	Yes		

About real estate

We offer for lease office space of 793 sqm in a modern administrative complex in Prague 4 - Kačerov with plenty of natural light and beautiful views of the city. It consists of four underground and seven above-ground floors, with four main cores and a central reception, which ensures easy and convenient access to each floor. On the top two floors there are green terraces with panoramic views of the surrounding area. In addition to conference rooms and relaxation areas, there is also a café on the ground floor.

The building is equipped with state-of-the-art technology for management, operations and access, and boasts LEED Gold certification. The entire complex is fully air-conditioned, with integrated fan coils and raised floors for maximum comfort. The complex also features a separate visitor elevator from the parking garage directly to the reception area, and a separate reception area on the north side for added privacy.

There is 24 hour security, central reception, external blinds, internet, fibre optic, security, opening windows and magnetic card access. The energy performance of the building is C.

102 CZK/sqm/month.

Parking: 110 EUR/month.