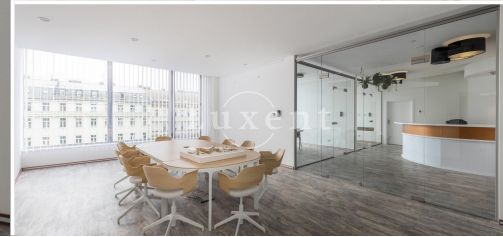
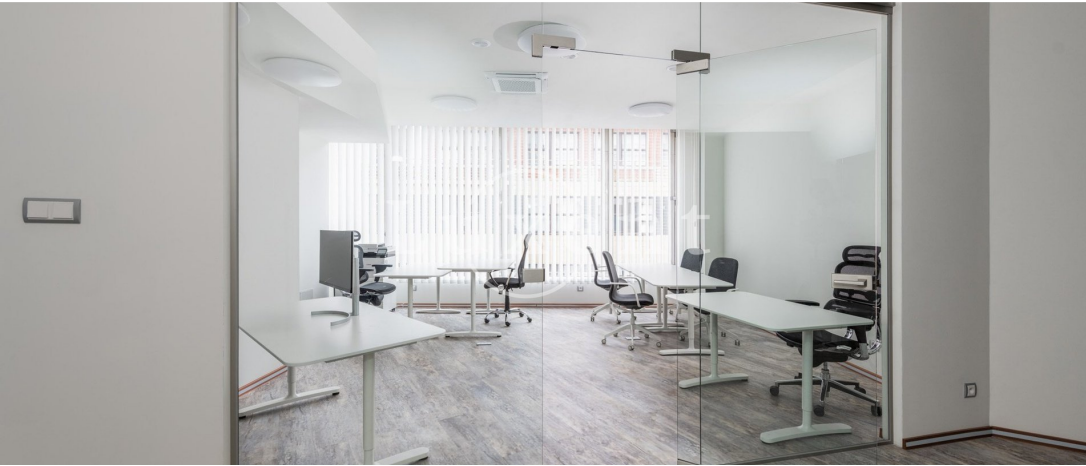




Commercial premises for rent, 405 sqm, Prague 1 - Nové Město



🏠 405 m² 📄 Václavské náměstí, Praha 1 - Nové Město 💰 200 000 CZK per month



WITH THIS PROPERTY, YOU'LL BE ASSISTED BY

Filip Sloupenský

COMMERCIAL LEASE SPECIALIST

filip.sloupensky@luxent.cz

+420 771 229 229

Order number	N6644	Price	200 000 CZK per month + services 100,- CZK/sqm/month
Address	Václavské náměstí, Praha 1 - Nové Město	Type	Offices
Usable area	405 m²	Parking	No
Low energy	No	Energy performance of the building	G - Extremely uneconomical
Floor	1st floor	Number of floors	7
Device	Yes	Lift	Yes
Date to move in	10. 10. 2023		

About real estate

We offer you beautiful offices on the 2nd floor with a prominent address on Wenceslas Square in the famous first Czechoslovak post-war department store. Large windows let in a lot of light and offer an exceptional view of the square. It has all the necessary equipment.

Wenceslas Square is a famous meeting point and a popular destination for tourists. The surrounding area offers all amenities, including many restaurants, cafes and cultural spaces. Náměstí léta is a popular location for retailers and for new brands entering the market. The House of Fashion is in close proximity to Muzeum metro station and Wenceslas Square tram stop.

Advances for services 100,-CZK/sqm/month.

Available immediately.